

# GRAVITY



DUST

TITAN

GREIGE

LIGHT

DARK

120x120.49"x49" \_ 60x120.24"x48" \_ 80x80.32"x32" \_ 60x60.24"x24" \_ 30x60.12"x24"

# GRAVITY

La forza materica del cemento rende Gravity un prodotto eclettico e moderno allo stesso tempo. Una collezione proposta in 5 colorazioni e 5 formati nella doppia versione cemento naturale e rullato, che risponde all'esigenza di uno stile in piena sintonia con il design contemporaneo.

The physical strength of cement makes Gravity a product that can suit a wide range of uses and is modern at the same time.

The collection is offered in 5 colourways and 5 sizes in two versions - natural cement and roller-compacted concrete - responding to the need for a style in complete harmony with contemporary design concepts.

La puissance des effets de matière du béton fait de Gravity un produit à la fois éclectique et moderne.

Une collection déclinée en 5 coloris et 5 formats dans la double version béton naturel et roulé, qui répond à l'exigence d'un style parfaitement coordonné au design contemporain.

Die Kraft des Materials Beton macht Gravity zu einem zugleich vielseitigen und modernen Produkt. Eine Kollektion, die in 5 Farbtönen und 5 Formaten in der doppelten Ausführung Naturbeton und Walzbeton angeboten wird, und dem Wunsch nach einem Stil entspricht, der perfekt zu modernem Design passt.

Материальная мощь цемента превращает Gravity в изделие, обладающее одновременно универсальным и современным характером.

Эта коллекция предлагается в 5 цветах и 5 форматах, в двух вариантах цемента (натуральный и уплотненный), и отвечает требованиям стиля в полном соответствии с современным дизайном.

**track**

60x120  
24"x48"

60x60  
24"x24"

30x60  
12"x24"

120x120  
48"x48"

80x80  
32"x32"

60x60 R11  
24"x24"

60x120  
24"x48"

60x60  
24"x24"

30x60  
12"x24"

**GRAVITY**  
dust



60x60 . 24"x24" rett / 60x120 . 24"x48" rett / 60x120 . 24"x48" Track rett



# GRAVITY

## dust

120x120 . 48"x48" rett

∨  
60x60 . 24"x24" Track rett



**track**

60x120  
24"x48"

60x60  
24"x24"

30x60  
12"x24"

120x120  
48"x48"

60x120  
24"x48"

80x80  
32"x32"

60x60  
24"x24"

60x60 R11  
24"x24"

30x60  
12"x24"

**GRAVITY**  
titan





60x60 . 24"x24 rett / 30x60 . 12"x24" rett / 5x5 . 2"x2" Mosaico Tessera rett





# GRAVITY

## titan

120x120 . 48"x48" rett





# GRAVITY

## titan

60x120 . 24"x48" Track rett

∨

30x60 . 12"x24" rett

30x60 . 12"x24" Mosaico Mix S/2

Titan, Track Titan rett



**track**

60x120  
24"x48"

60x60  
24"x24"

30x60  
12"x24"

120x120  
48"x48"

80x80  
32"x32"

60x60 R11  
24"x24"

60x120  
24"x48"

60x60  
24"x24"

30x60  
12"x24"

**GRAVITY**  
greige



60x60 R11 . 24"x24" rett







# GRAVITY

## greige

120x120 . 48"x48" rett





# GRAVITY

## greige

60x120 . 24"x48" rett  
60x120 . 24"x48" Track rett

∨  
60x60 . 24"x24" Inserto Gravity Greige S/3 rett





**track**

60x120  
24"x48"

60x60  
24"x24"

30x60  
12"x24"

**80x80**  
32"x32"

60x120  
24"x48"

60x60  
24"x24"

30x60  
12"x24"

**GRAVITY**  
light



60x60 . 24"x24" rett / 15x60 . 6"x24" Mosaico 3D rett





# GRAVITY

## light

80x80 . 32"x32" rett  
60x120 . 24"x48" rett

∨  
15x60 . 6"x24" Mosaico 3D rett



**track**

60x120  
24"x48"

60x60  
24"x24"

30x60  
12"x24"

80x80  
32"x32"

60x120  
24"x48"

60x60  
24"x24"

30x60  
12"x24"

# **GRAVITY**

**dark**





30x60 . 12"x24" rett / 5x5 . 2"x2" Mosaico Tessera rett / 30x60 . 12"x24" Mosaico Mix S/2 Dark, Track Dark rett





# GRAVITY

## dark

60x60 . 24"x24" rett

∨  
60x60 . 24"x24" Track rett

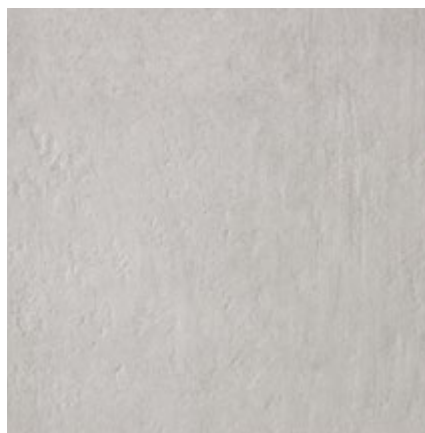


# GRAVITY

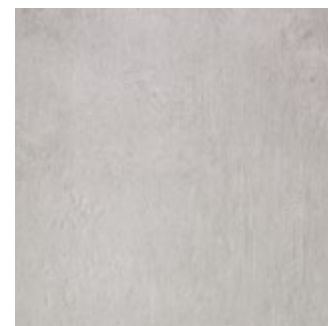
## dust



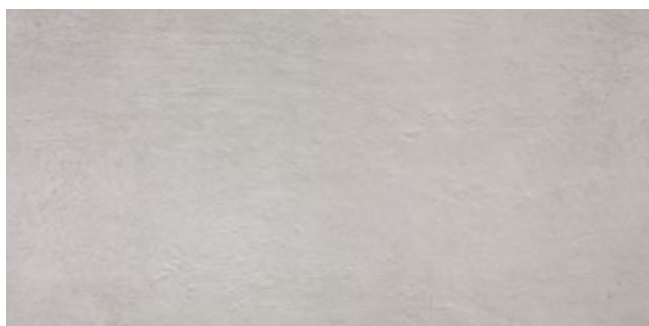
120x120 . 48"x48" RETT



80x80 . 32"x32" RETT



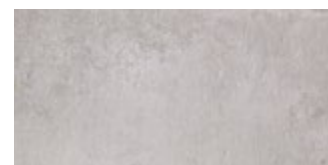
60x60 . 24"x24" R11 RETT



60x120 . 24"x48" RETT



60x60 . 24"x24" RETT



30x60 . 12"x24" RETT



TRACK 60x120 . 24"x48" RETT



TRACK 60x60 . 24"x24" RETT



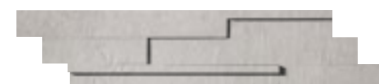
TRACK 30x60 . 12"x24" RETT



MOSAICO GRAVITY DUST  
30x30 . 12"x12" RETT  
(tessera 5x5 . 2"x2")



MOSAICO MIX S/2 DUST/DUST TRACK  
30x60 . 12"x24" RETT



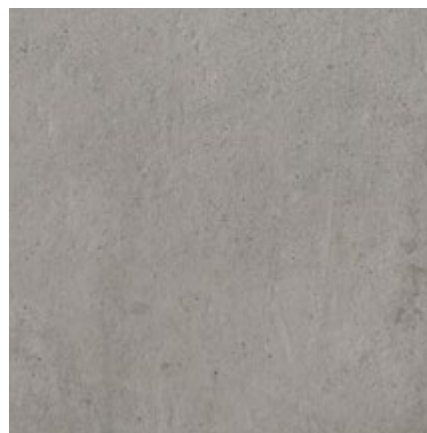
MOSAICO 3D DUST  
15x60 . 6"x24" RETT

# GRAVITY

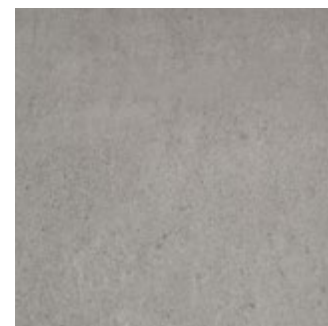
## titan



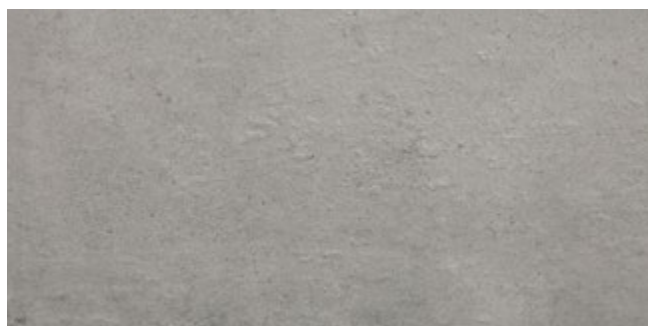
120x120 . 48"x48" RETT



80x80 . 32"x32" RETT



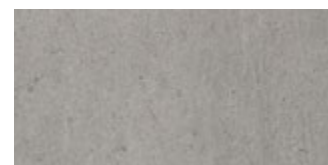
60x60 . 24"x24" **R11** RETT



60x120 . 24"x48" RETT



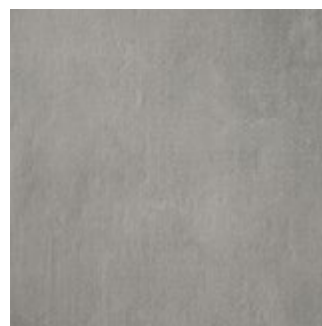
60x60 . 24"x24" RETT



30x60 . 12"x24" RETT



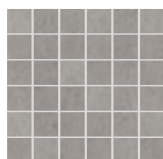
TRACK 60x120 . 24"x48" RETT



TRACK 60x60 . 24"x24" RETT



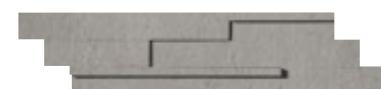
TRACK 30x60 . 12"x24" RETT



MOSAICO GRAVITY TITAN  
30x30 . 12"x12" RETT  
(tessera 5x5 . 2"x2")



MOSAICO MIX S/2 TITAN/TITAN TRACK  
30x60 . 12"x24" RETT



MOSAICO 3D TITAN  
15x60 . 6"x24" RETT

# GRAVITY

## greige



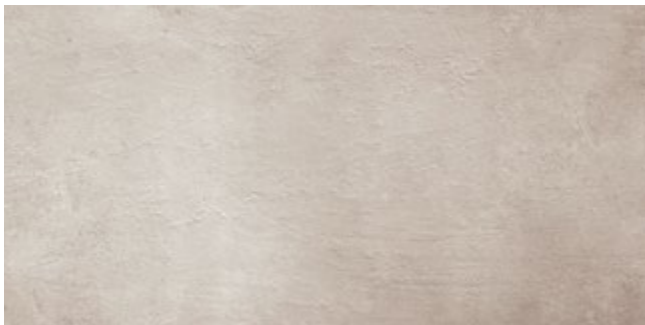
120x120 . 48"x48" RETT



80x80 . 32"x32" RETT



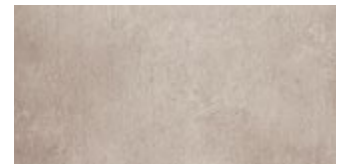
60x60 . 24"x24" **R11** RETT



60x120 . 24"x48" RETT



60x60 . 24"x24" RETT



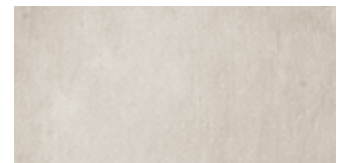
30x60 . 12"x24" RETT



TRACK 60x120 . 24"x48" RETT



TRACK 60x60 . 24"x24" RETT



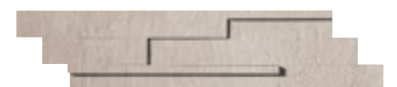
TRACK 30x60 . 12"x24" RETT



MOSAICO GRAVITY GREIGE  
30x30 . 12"x12" RETT  
(tessera 5x5 . 2"x2")



MOSAICO MIX S/2 GREIGE/GREIGE TRACK  
30x60 . 12"x24" RETT



MOSAICO 3D GREIGE  
15x60 . 6"x24" RETT

# GRAVITY

## light



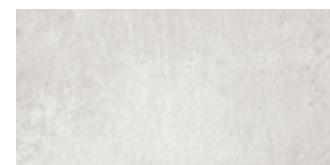
80x80 . 32"x32" RETT



60x120 . 24"x48" RETT



60x60 . 24"x24" RETT



30x60 . 12"x24" RETT



TRACK 60x120 . 24"x48" RETT



TRACK 60x60 . 24"x24" RETT



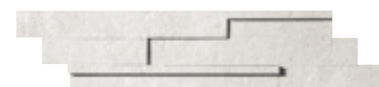
TRACK 30x60 . 12"x24" RETT



MOSAICO GRAVITY LIGHT  
30x30 . 12"x12" RETT  
(tessera 5x5 . 2"x2")



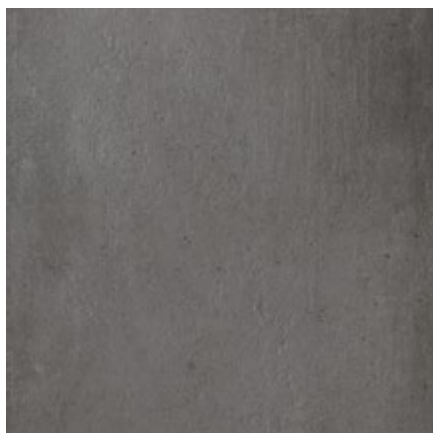
MOSAICO MIX S/2 LIGHT/LIGHT TRACK  
30x60 . 12"x24" RETT



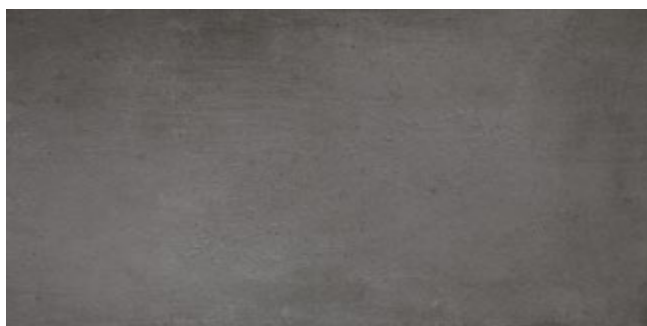
MOSAICO 3D LIGHT  
15x60 . 6"x24" RETT

# GRAVITY

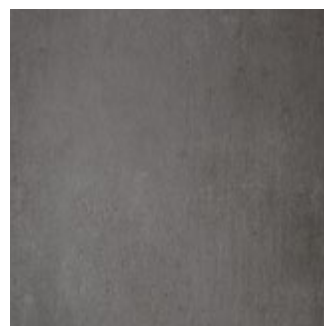
## dark



80x80 . 32"x32" RETT



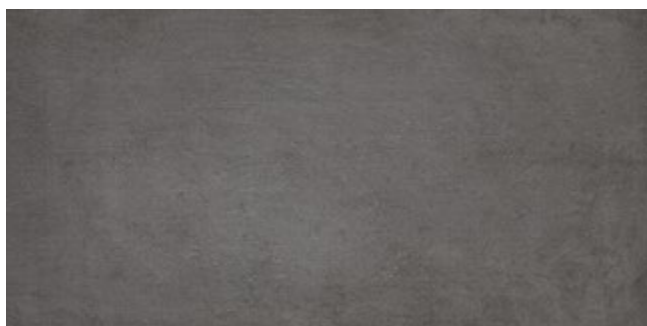
60x120 . 24"x48" RETT



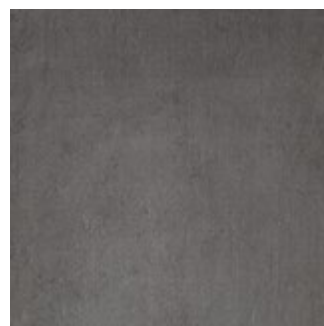
60x60 . 24"x24" RETT



30x60 . 12"x24" RETT



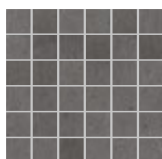
TRACK 60x120 . 24"x48" RETT



TRACK 60x60 . 24"x24" RETT



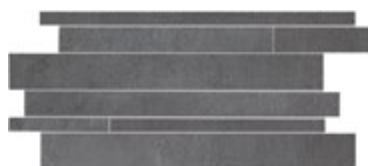
TRACK 30x60 . 12"x24" RETT



MOSAICO GRAVITY DARK  
30x30 . 12"x12" RETT  
(tessera 5x5 . 2"x2")

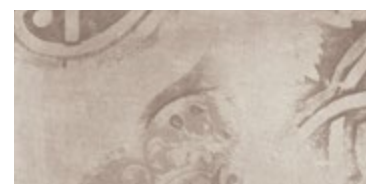


MOSAICO MIX S/2 DARK/DARK TRACK  
30x60 . 12"x24" RETT



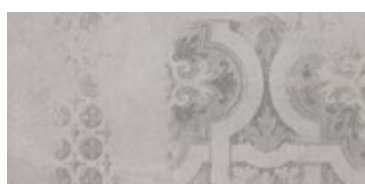
MOSAICO 3D DARK  
15x60 . 6"x24" RETT





Inserto Gravity DUST S/3  
60x60 . 24"x24"

Inserto Gravity GREIGE S/3  
60x60 . 24"x24" RETT



Inserto Gravity DUST S/6  
30x60 . 12"x24" RETT



Inserto Gravity GREIGE S/6  
30x60 . 12"x24" RETT

- \* Decori ad uso residenziale
- \* Decors for residential use
- \* Décor pour usage résidentiel
- \* Dekore nur fuer den Wohnbereich geeignet
- \* Декоры для использования в жилых помещениях

## Pezzi Speciali

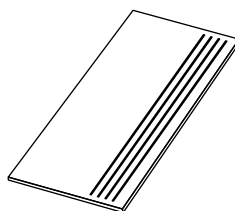
Trims. Pièces Spéciales. Formstücke. Специальные изделия.



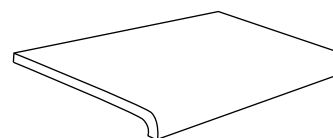
BATTISCOPA  
7,5x80 . 3"x32" RETT



BATTISCOPA  
6,5x60 . 2<sup>9</sup>/<sub>16</sub>x24" RETT



STEP MOLATO  
30x60 . 12"x24" RETT



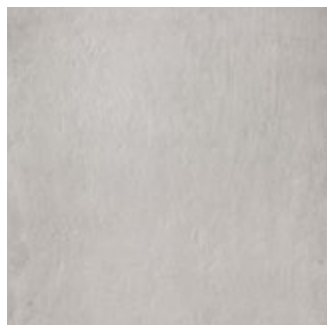
GRADONE CURVE MONOLITICO  
32,5x60x5 . 12<sup>13</sup>/<sub>16</sub>x24"x2" RETT

Serie completa  
Complete range  
Série complète  
Ganze Serie  
Полная серия

# GRAVITY 19mm



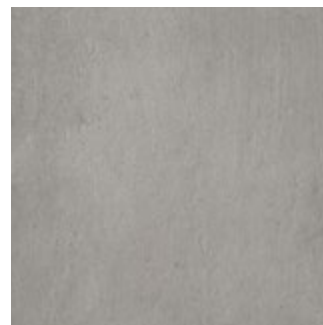
19 mm - 13/16"  
spessore  
thickness  
épaisseur  
stärke  
толщина



dust R11 60x60 . 24"x24" RETT



greige R11 60x60 . 24"x24" RETT

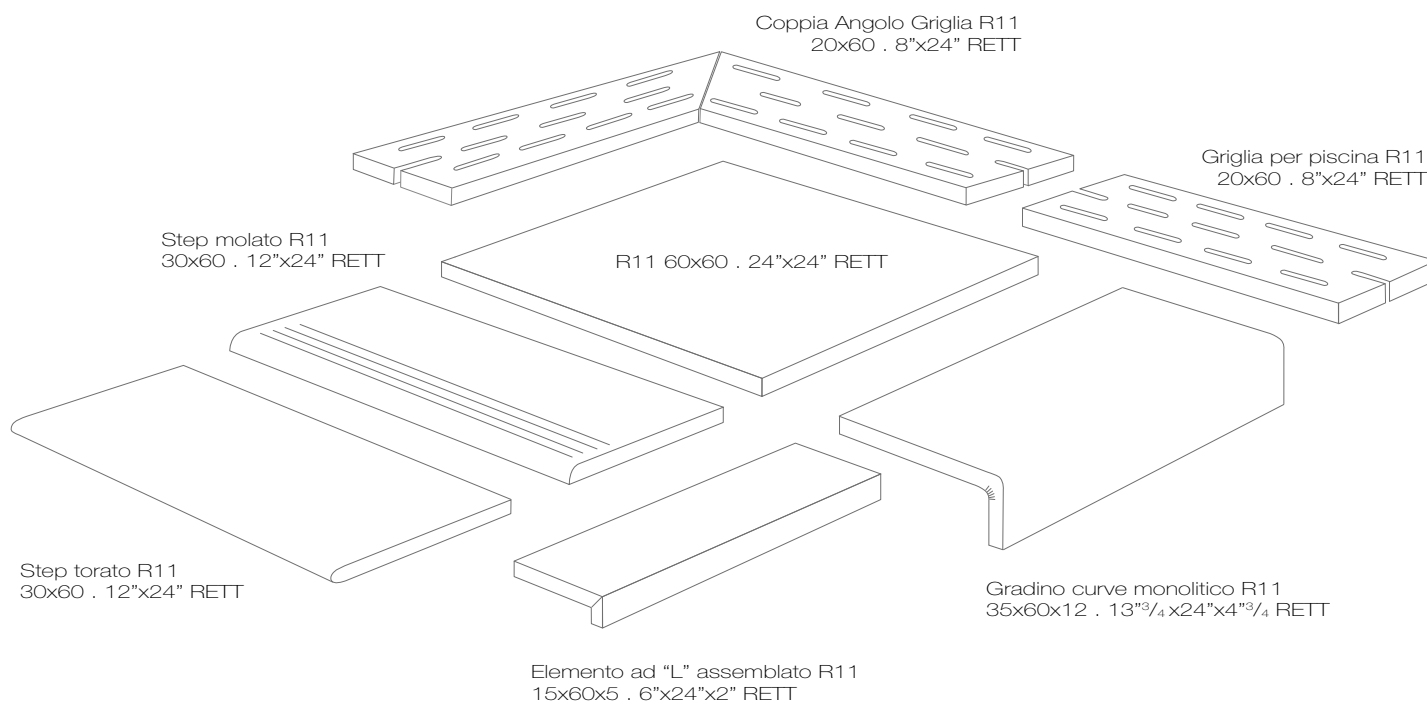


titan R11 60x60 . 24"x24" RETT

## 19mm

### Pezzi Speciali

Trims. Pièces Spéciales. Formstücke. Специальные изделия.

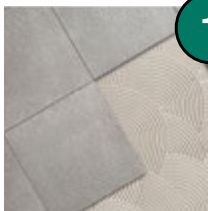




# 19 come?

## mm

HOW? COMMENT? WIE? KAK?



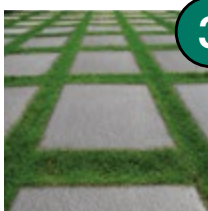
### 1 POSA A COLLA TRADIZIONALE

Traditional laying with glue  
Pose à la colle traditionnelle  
Verlegung mit Kleber  
Традиционная укладка на клей



### 2 POSA A SECCO SU GHIAIA E SABBIA

Dry installation onto gravel or sand  
Pose à sec sur gravier ou sable  
Trockenverlegung in Splitt oder auf Sandbett  
Сухая укладка на песок или щебень



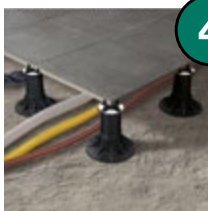
### 3 POSA A SECCO SU ERBA

Dry Installation onto grass  
Pose à sec sur gazon  
Trockenverlegung auf Rasen  
Сухая укладка на траву



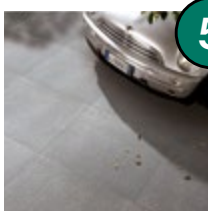
### 4 POSA SOPRAELEVATA DRENANTE

Installation using a draining raised structure  
Pose de drainage élevée  
Doppelbodenverlegung auf Stelzlagern mit Drainage  
Укладка фальшполов с дренажом



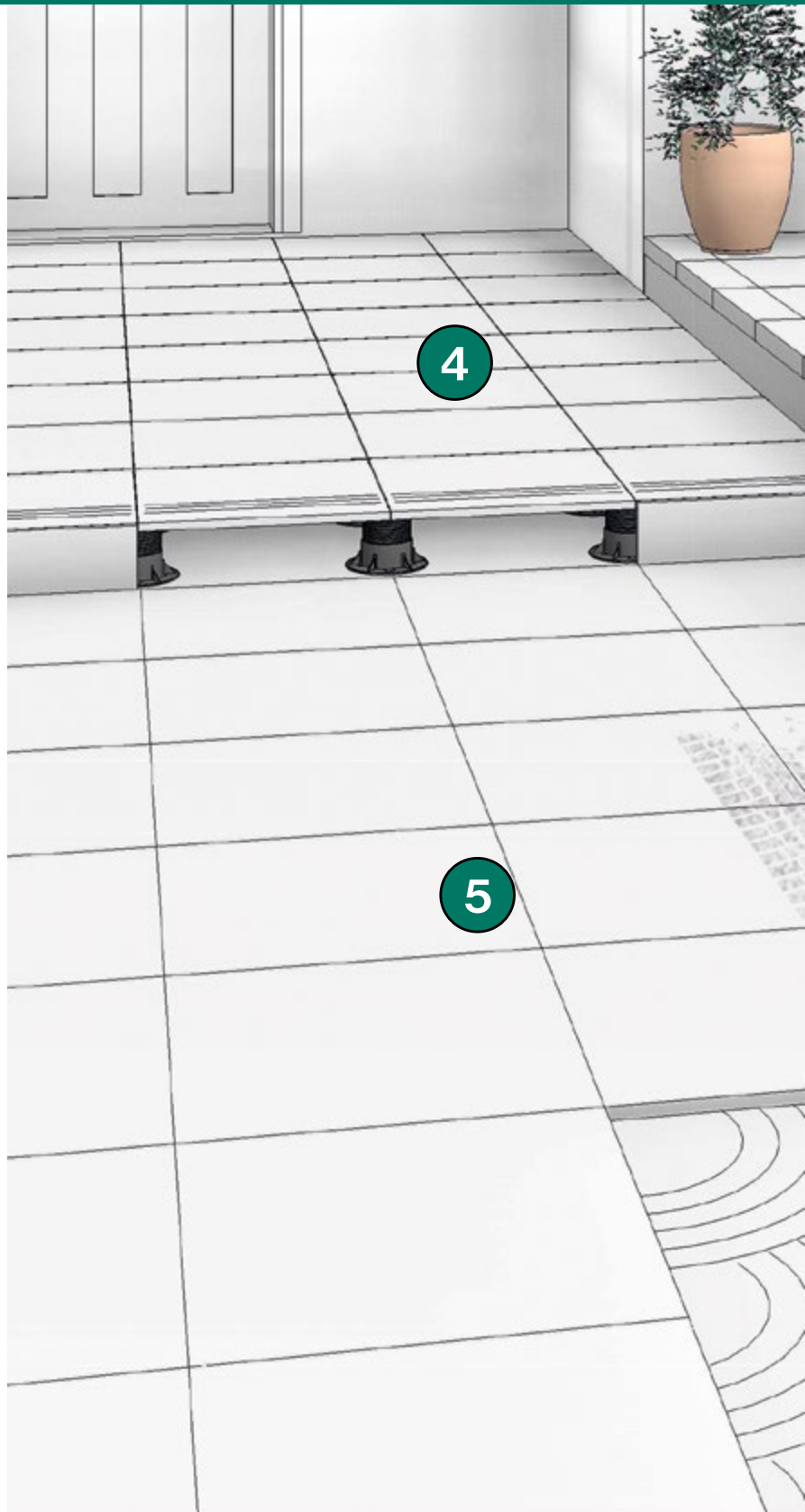
### 4 POSA SOPRAELEVATA

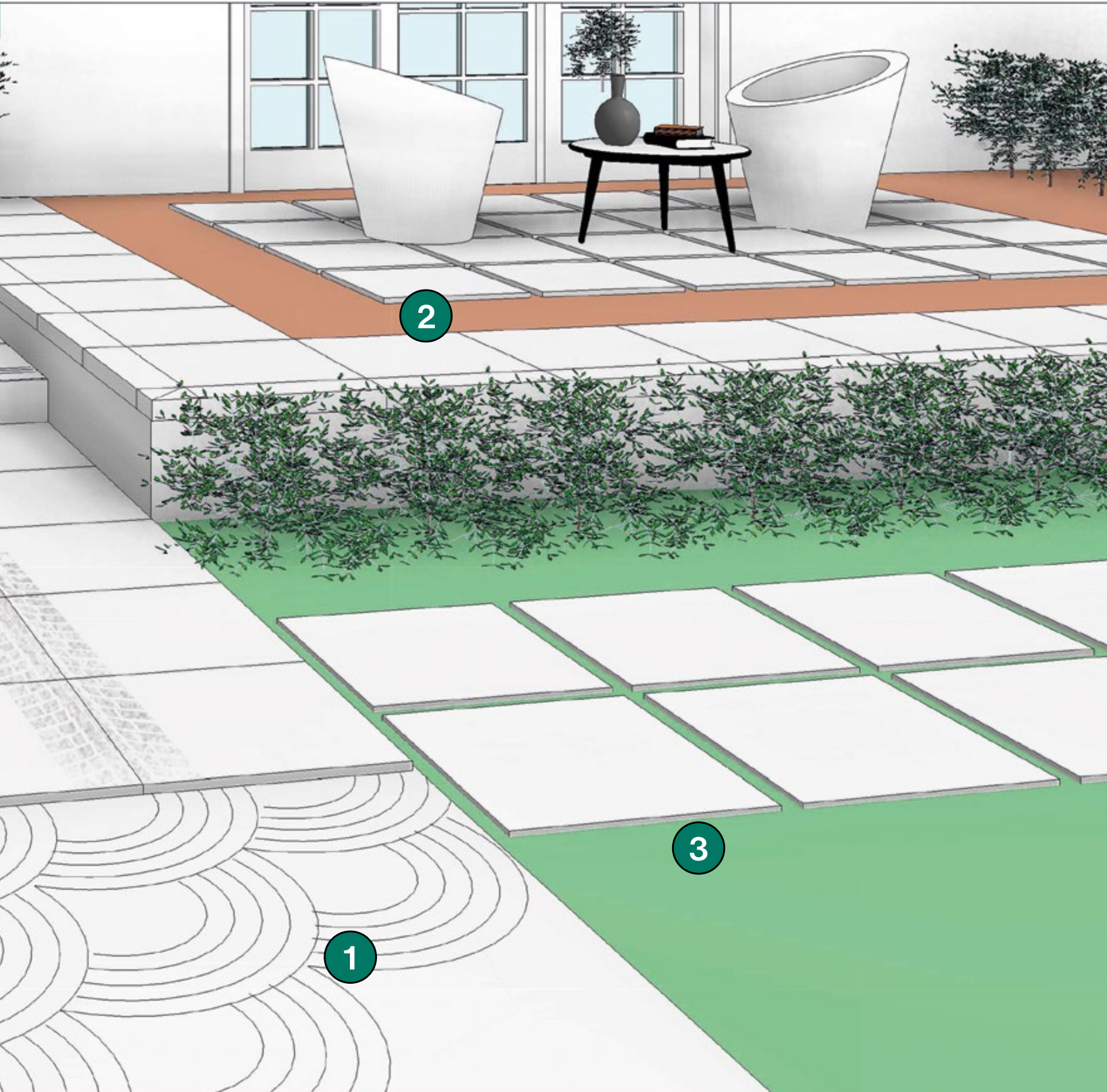
Installation using a raised structure  
Pose de planchers flottants  
Doppelbodenverlegung auf regulierbaren Trägern  
Укладка фальшполов



### 5 POSA SU MASSETTO CARRABILE

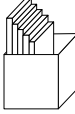
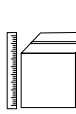

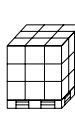
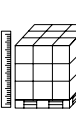

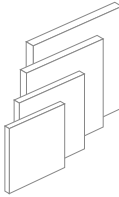
Laying with glue for carriageable path  
Pose sur une allée en béton  
Verlegung auf befahrbaren Estrich  
Укладка на стяжку для движения транспортных средств





## imballaggi

Packing  
Emballage  
Verpackung  
Упаковка

								
			PCS/BOX	SQM/BOX	KGS/BOX	BOXES/PALLET	SQM/PALLET	KGS/PALLET
	120x120 . 48"x48"	RETT	1	1,44	38,00	36	51,84	1.368
	60x120 . 24"x48"	RETT	2	1,44	32,00	21	30,24	688
	60x120 . 24"x48" track	RETT	2	1,44	32,00	21	30,24	688
	80x80 . 32"x32"	RETT	2	1,28	31,00	40	51,20	1.260
	60x60 . 24"x24"	RETT	3	1,08	24,00	32	34,56	784
	60x60 . 24"x24" track	RETT	3	1,08	24,00	32	34,56	784
	60x60 . 24"x24"	RETT R11	3	1,08	24,00	32	34,56	784
	30x60 . 12"x24"	RETT	6	1,08	23,80	40	43,20	968
	30x60 . 12"x24" track	RETT	6	1,08	23,80	40	43,20	968
	60x60 . 24"x24" <b>19mm</b>	RETT R11	2	0,72	31,30	32	23,04	1.025



Posa consigliata con una sfalsatura tra ciascun listello non superiore al 25% della lunghezza.  
When laying, you are recommended not to stagger the strips by more than 25% of the length.  
Pose conseillée avec un décalage entre chaque listel non supérieur au 25% de la longueur.  
Wir empfehlen eine Verlegung im Viertelverband.  
Рекомендуется укладка с разномом элементов друг относительно друга, не превышающим 25% длины элемента



Per i grandi formati è consigliata la posa con l'utilizzo di distanziatori livellanti, tipo Levelling System di Raimondi.  
We suggest to lay large sizes with "levelling spacers" like the Raimondi's Levelling System.  
Pour les grands formats, nous conseillons croissillons nivelants, type Levelling System de l'usine Raimondi.  
Wir empfehlen fuer die Verlegung der grossen Formaten die Benutzung von Autolievelierungssysteme, wie z.B. Raimondi Levelling System.  
Для выклейки больших форматов советуем использовать распорную выравнивающую деталь типа Levelling System di Raimondi.

### NOTE TECNICHE - TECHNICAL NOTES - NOTES TECHNIQUES - TECHNISCHE ANMRKUNGEN - ТЕХНИЧЕСКИЕ ЗАМЕЧАНИЯ

Tutti i formati sono nominali. Cercom Ceramiche si riserva la facoltà di modificare in qualunque momento le informazioni e le caratteristiche illustrate nel presente catalogo, che non sono comunque da ritenere legalmente vincolanti. I colori e le caratteristiche estetiche dei prodotti sono quanto più possibile vicini a quelli reali, nei limiti consentiti dai processi di stampa.

All sizes are nominal. Cercom Ceramiche reserves the right to modify the information and the characteristics illustrated in this catalogue (which are in any case not legally binding) at any moment. The colours and appearance features of the products are as close as possible to reality, within the limitation of the printing process.

Tous les formats sont nominaux. Cercom Ceramiche se réserve la faculté de modifier à tout moments les informations et les caractéristiques figurant dans le présent catalogue, lesquelles niengagent pas par le fabricant au plan légal. Les couleurs et les caractéristiques esthétiques sont fidèles aux couleurs et caractéristiques réelles dans les limites des procédés diimpression.

Alle Formate sind Nennwerte. Die Firma Cercom Ceramiche behält sich vor, die in diesem Katalog enthaltenen Informationen und Eigenschaften jederzeit zu ändern; sie gelten auf keinen Fall als gesetzlich bindend. Die Farben und ästhetischen Eigenschaften der Produkte kommen innrhalb der Möglichkeiten der Druckverfahren den tatsächlichen Eigenschaften so weit wie möglich nahe.

Все форматы являются номинальными. Cercom Ceramiche оставляет за собой пзменять в любой момент данные и характеристики, приведенные в настоящем каталоге, которые в любом случае не считаются юридически обязательными. Цветовая окраска и эстетические характеристики изделий приближаются как можно больше к реальным, в пределах, допускаемых процессами печати.

### CONSIGLI PER LA POSA - LAYING SUGGESTIONS - CONSEILS POUR LA POSE - VERLEGEHINWEISE - РЕКОМЕНДАЦИИ ПО УКЛАДКЕ

Stendere a terra alcuni metri (almeno 3 mq) per controllare l'effetto d'insieme. Posare il materiale attingendo da più scatole controllandone accuratamente calibro, tonalità e scelta. • Nella posa è consigliabile lasciare una fuga di 2 mm fra le piastrelle utilizzando stucco in tono. • La posa modulare è consigliata con una fuga di almeno 2 mm. • È comunque compito del progettista stabilire, in funzione della struttura e della destinazione d'uso del piano di calpestio, il corretto modo di applicazione delle piastrelle.

Lay some pieces of product (at least 3 sqm) to check the overall effect. Lay the material taking it from several boxes and carefully check its size accuracy, shade and material sorting. • In the lay-out is advisable to leave at least 2 mm joint between each tile and fill with grout of the same colour as the tile. • We recommend modular laying with a 2 mm - <sup>-3</sup>/<sub>32</sub> joint. • However, the designers has to establish the correct way of application of the tiles depending on the structure and the foreseen utilization of the floor.

Appuyer sur le sol quelques pieds (au moins 2 mc) pour apprécier l'effet global. Poser le matériel en le prenant de plusieurs boîtes et en contrôlant l'épaisseur, les nuances et la qualité des différentes pièces. • Lors de la pose, on recommande de laisser un joint de 2 mm entre les carreaux en utilisant un mastic du même ton. • La pose modulaire est calculée avec un joint de 2 mm. • D'ailleurs c'est le concepteur qui doit établir, sur la base de la structure et de la destination d'emploi du plan de piétinement, le procédé d'application correct des carreaux.

Eine Quadratmeter (min. 2 qm) auf dem Boden legen, um die Gesamtwirkung nachzuprüfen. Wir empfehlen Fliesen aus mehreren Kartons zu verlegen, nach einer sorgfältigen Prüfung des Kalibers, des Farbtons und der Sortierung. • Deswegen werden eine min. 2 mm Fuge zwischen den Fliesen und ein weiss oder grauer Kitt empfohlen. • Die Modulverlegung wird mit einer Mindestfuge von 2 mm empfohlen. Es ist auf jeden Fall Aufgabe des Planers, nach der Struktur und dem Verwendungszweck der Trittläche, die richtige Verlegeart der Fliesen zu bestimmen.

Разложить изделия на полу для проверки общего эффекта. Укладывать материал, тщательно проверяя калибр, тональность и сорт. • При укладке рекомендуется оставлять между плитками зазор в 2 мм, используя подходящую по тону замазку. • Модульную укладку рекомендуется выполнять со швом не менее 2 мм. • В любом случае является задачей проектировщика, в зависимости от структуры и назначения, определять соответствующий способ укладки плитки.

<b>CE</b>
GRUPPO ROMANI S.P.A. INDUSTRIE CERAMICHE VIA A. VOLTA 9, 23/25 42013 CASALGRANDE (RE)
05 001CPR2013-07-01
<b>EN 14411:2012</b>
Piastrelle di ceramica pressate a secco, con assorbimento di acqua E <sub>w</sub> ≤ 0,5%, per pavimentazioni interne ed esterne.
Dry pressed ceramic tile, with water absorption E <sub>w</sub> ≤ 0,5%, for internal and external floorings.



© Copyright 2016 Gruppo Romani S.p.A. Industrie Ceramiche

Gruppo Romani S.p.A. Industrie Ceramiche  
www.grupporomanispa.com















  
Ceramics of Italy



# GRAVITY

## GRES PORCELLANATO SMALTATO COLORATO IN MASSA - ISO 13006 Bla GL

GLAZED PORCELAIN STONEWARE WITH COLORED BODY - ISO 13006 Bla GL - GRÈS CÉRAMÉ ÉMAILLÉ COLORE DANS LA MASSE - ISO 13006 Bla GL  
GLASIERTES FEINSTEINZEUG IN DER MASSE GEFÄRBT - ISO 13006 Bla GL - ГЛАЗУРОВАННЫЙ КЕРАМОГРАНИТ, ОКРАШЕННЫЙ ПО ВСЕЙ ТОЛЩИНЕ - ISO 13006 Bla GL

 UNI EN ISO 10545-2	<b>Lunghezza e larghezza</b> Length and width Longueur et largeur Länge und Breite Длина и ширина	Deviaz. val. medio % rispetto a dimens. di fabbricazione Écart dimensionnel moyen en % par rapport aux dimensions de fabrication Deviation of the average size for each tile from the work size (%) Abweichung des Durchschnittswertes in % hinsichtlich der Produktionsgröße Отклонение средн. значения, % от производственных размеров > 410 cm <sup>2</sup> +/- 0,6% - ≤ 410 cm <sup>2</sup> +/- 0,75%	± 0,3% ± 2 mm	
	<b>Rettilineità degli spigoli</b> Straightness of sides Rectitude des arêtes Kantengeradheit Прямолинейность кромок	+/- 0,5%	Deviaz. val. medio % rispetto a dimens. di fabbricazione Deviation of the average size for each tile from the average size to the 10 test specimens (%) Écart de valeur moyenne unitaire % en rapport à la valeur moyenne de 10 échantillons mesurés Abweichung des Durchschnittswertes der einzelnen Fliesen in % hinsichtlich des Durchschnitts von 10 getesteten Mustern Отклонение средн. значения, отдельной плитки относительно средн. значения 10 измеренных образцов +/- 0,5%	± 0,3% ± 2 mm
	<b>Spessore / Thickness / Épaisseur/ Stärke / Толщина</b>	+/- 5%		± 5% MAX ± 0,5 mm
	<b>Ortogonalità</b> Rectangularity Orthogonalité Rechtwinkligkeit Ортогональность	+/- 0,5%		± 0,3% ± 1,5 mm
	<b>Variazioni di tono.</b> Shade variations Variations de nuance. Tonvariationen. Вариации оттенка		 V2 LIEVE VARIAZIONE LIGHT VARIATION LEGERE VARIATION GERINGE ABWEICHUNG ПОЛОЖИТЕЛЬНЫЕ ИЗМЕНЕНИЯ	
 UNI EN ISO 10545-3	<b>Assorbimento d'acqua</b> Water absorption Absorption d'eau Wasseraufnahme Водопоглощение	≤ 0,5% GRUPPO Bla UGL ≤ 0,5% GRUPPO Bla GL	E ≤ 0,1%	
 UNI EN ISO 10545-4	<b>Resistenza della superficie (scala MOHS)</b> Scratch hardness (MOHS scale) Dureté de la surface (échelle MOHS) Oberflächenhärte (MOHS skala) Поверхностная прочность по (шкале Мооса)	EN 101	> 6	
 UNI EN ISO 10545-4	<b>Resistenza a flessione e forza di rottura</b> Modulus of rupture and breaking strength résistance à la flexion et force de rupture Biegefestigkeit und Bruchlast Прочность на изгиб Модуль жесткости	S ≥ 1300 N	S ≥ 1300 N	
		R ≥ 35 N/mm <sup>2</sup>	R ≥ 35 N/mm <sup>2</sup>	
 UNI EN ISO 10545-6	<b>Resistenza all'abrasione profonda</b> Abrasion resistance Résistance à l'abrasion Verschleiß (Volumenverlust) Сопротивление глубокому истиранию	≤ 175 mm <sup>3</sup>	—	
 UNI EN ISO 10545-7	<b>Resistenza alla abrasione della superficie di piastrelle smaltate</b> Resistance to surface abrasion of glazed tiles Résistance à l'abrasion de la surface des carreaux émaillés Widerstand gegen Abrieb der Oberfläche der glasierten Fliesen Стойкость глазурованной плитки к поверхностному истиранию	<b>Come dichiarato dal produttore</b> See manufacturer's declaration Selon déclaration du producteur Entsprechend der Herstellerangaben Как указано изготовителем	<b>Classe 5</b> Class 5 Classe 5 Gruppe 5 Класс 5	
 UNI EN ISO 10545-8	<b>Coefficiente di dilatazione termica lineare</b> Linear thermal expansion coefficient Dilatation thermique linéaire Lineare Wärmeausdehnung Коэффициент линейного теплового расширения	<b>Come dichiarato dal produttore</b> See manufacturer's declaration Selon déclaration du producteur Entsprechend der Herstellerangaben Как указано изготовителем	<b>Metodo disponibile</b> Method available Méthode disponible Verfügbares Verfahren Определяется производителем	
 UNI EN ISO 10545-9	<b>Resistenza allo shock termico</b> Thermal shock resistance Résistance au choc thermique Temperaturwechselbeständigkeit Стойкость к тепловым перепадам	<b>Nessun campione deve presentare alterazioni</b> No sample must show visible alteration Aucun carreau ne doit présenter d'altération Kein Muster darf sichtbare Veränderungen zeigen Никакой образец не должен показывать изменений	<b>Resistente</b> Résistant Widerstandsfähig Устойчивый	
 UNI EN ISO 10545-12	<b>Resistenza al gelo</b> Frost resistance Résistance au gel Frostbeständigkeit Морозостойкость	<b>Non devono presentare difetti visibili</b> No sample must show visible defect Aucun carreau ne doit présenter de défaut Muster dürfen keine sichtbaren Schäden zeigen Не должны обнаруживать видимые дефекты	<b>Ingelivo</b> Frost proof Ingeleif Fröstsicher Морозостойкость	
 UNI EN ISO 10545-13	<b>Resistenza all'attacco chimico (tranne acido fluoridrico)</b> Resistance to chemical attack (except hydrofluoric acid) Résistance à l'attaque chimique (sauf acide fluoridrique) Säure- und Laugenbeständigkeit (außer Flußsäure) Стойкость к бытовым химикатам	<b>Nessun campione deve presentare alterazioni</b> No sample must show visible alteration Aucun carreau ne doit présenter d'altération Muster dürfen keine sichtbaren Veränderungen zeigen Никакой образец не должен показывать изменений	<b>Classe GA-GLA</b> Class GA-GLA Classe GA-GLA Gruppe GA-GLA Класс GA-GLA	
 UNI EN ISO 10545-14	<b>Resistenza alle macchie di piastrelle smaltate</b> Resistance to stains of glazed tiles Résistance aux taches des carreaux émaillés Widerstand gegen Fleckenbildner der glasierten Fliesen Стойкость глазурованной плитки к образованию пятен	<b>Nessun campione deve presentare alterazioni</b> No sample must show visible alteration Aucun carreau ne doit présenter d'altération Muster dürfen keine sichtbaren Veränderungen zeigen Никакой образец не должен показывать изменений	<b>Classe 5</b> Class 5 Classe 5 Gruppe 5 Класс 5	
 B.C.R.A. REPC/CEC 6/81 DIN 51130 DIN 51097 ASTM C1028	<b>Resistenza alla scivolosità. Coefficiente di attrito medio</b> Skid resistance. Average coefficient of friction Résistance au glissement. Coefficient de frottement moyen Rutschfestigkeit. Mittlerer Reibungswert Сопротивление скольжению. Средний коэффициент трения	B.C.R.A. REP. CEC. 6/81 (NO LAPP - NO LEV)	0,40 ≤ f <sup>M</sup> ≤ 0,74	
		DIN 51130 ≥ R 9 (NO LAPP - NO LEV)	<b>R10 - R11</b>	
		DIN 51097 (NO LAPP - NO LEV)	<b>R10:</b> Classe B Class B Classe B Gruppe B Класс B	<b>R11:</b> Classe C Class C Classe C Gruppe C Класс C
		ASTM C1028 (NO LAPP - NO LEV)	f <sup>M</sup> ≥ 0,70 dry f <sup>M</sup> ≥ 0,60 wet	R11 f <sup>M</sup> ≥ 0,70 dry f <sup>M</sup> ≥ 0,70 wet
		DCOF	f <sup>M</sup> ≥ 0,50 dry	



DAL1975

**CERCOM CERAMICHE**

[www.cercomceramiche.it](http://www.cercomceramiche.it)

Via A. Volta 23/25 - 42013 Casalgrande (RE) Italy  
Tel. +39 0522 998411/911  
Fax Italy +39 0522 841338  
Fax Export +39 0522 996218